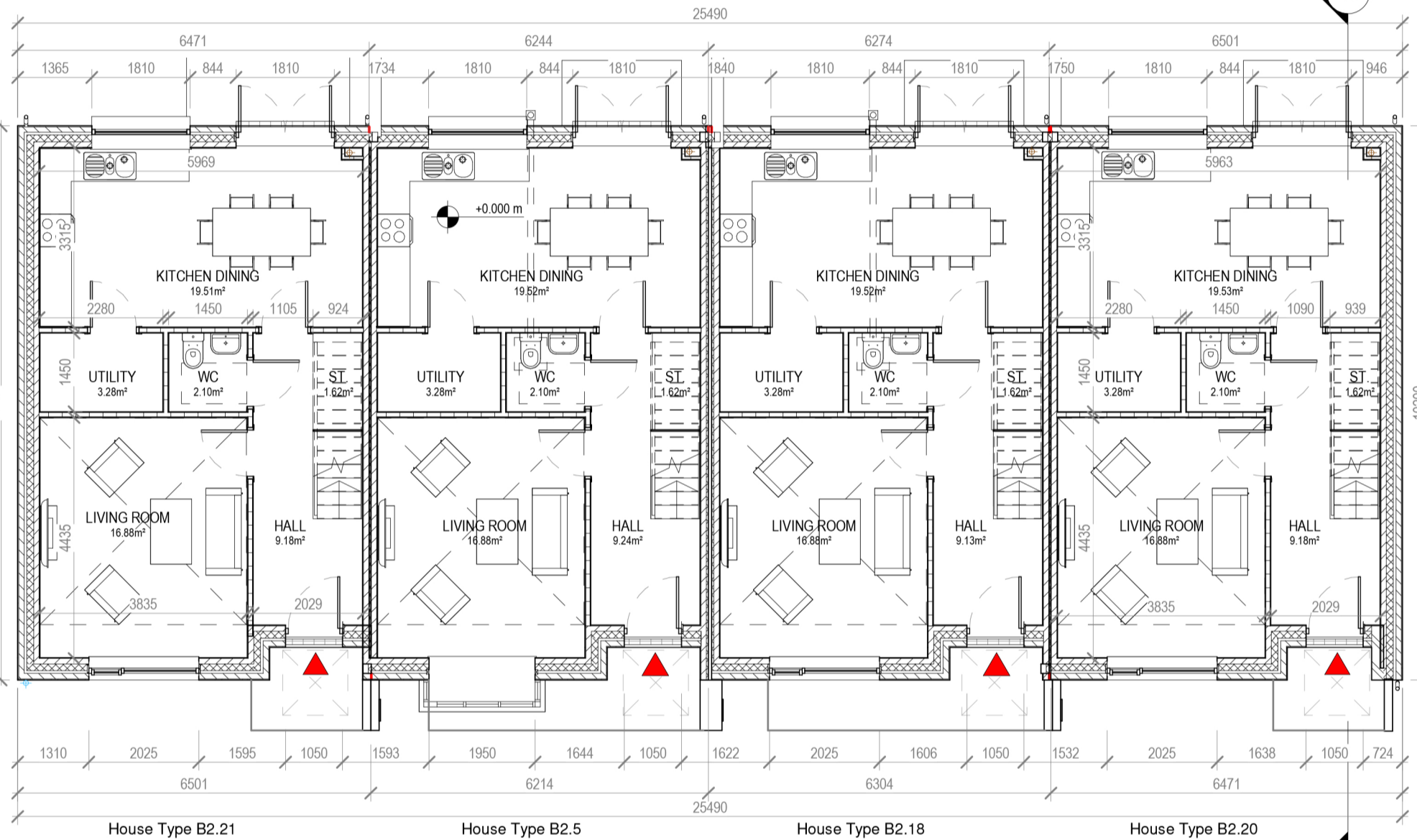
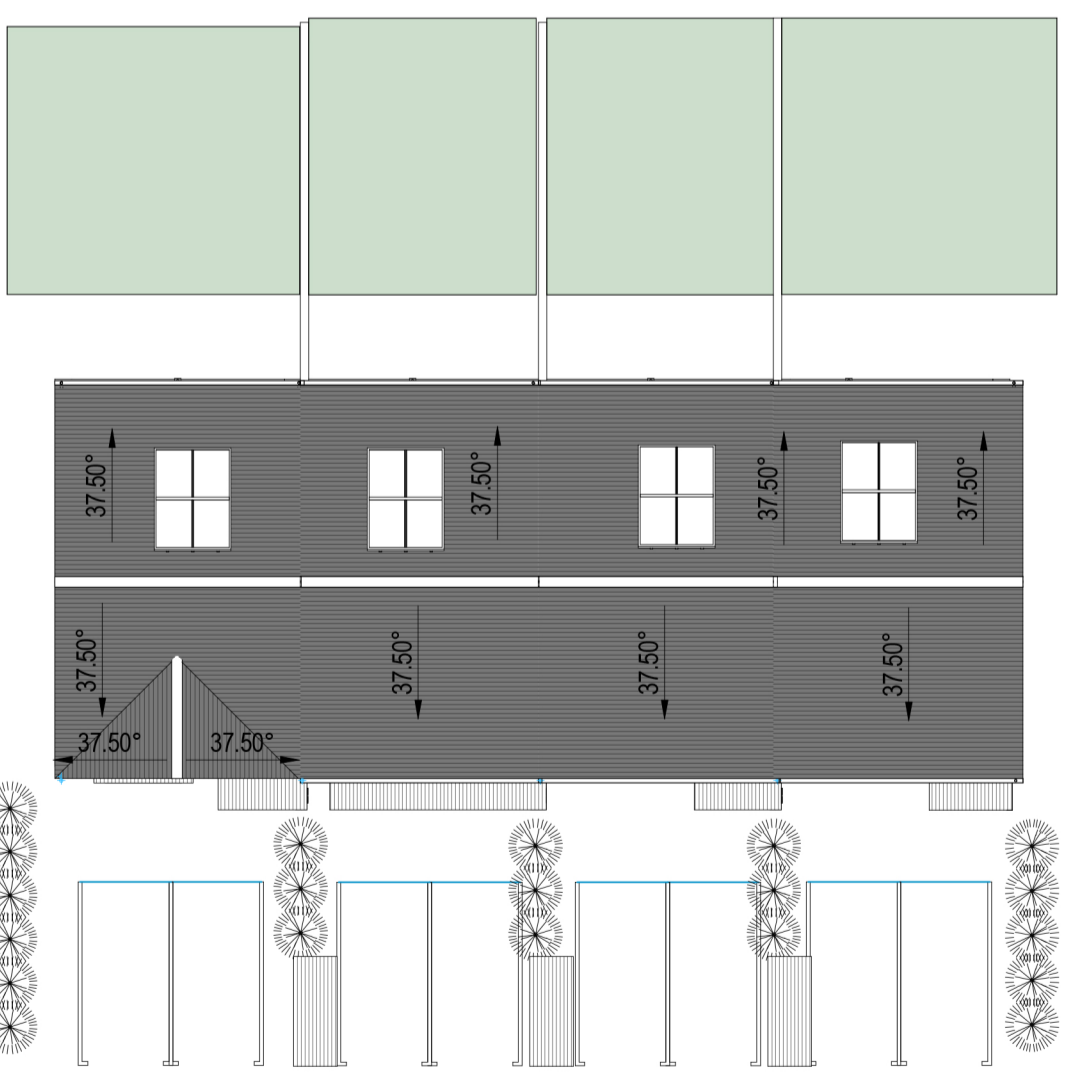


2 Block 4.2 - First Floor Plan  
1:100



1 Block 4.2 - Ground Floor Plan  
1:100



8 Block 4.2 - Roof Plan  
1:200



9 Block 4.2 - 3D View

HOUSE TYPE B2.21 / B2.5 / B2.18 / B2.20 TERRACE  
3 BEDROOM / 5 PERSON  
FLOOR AREA 110 M<sup>2</sup>

	Dwelling Type	Gross Floor Area	Minimum Main Living room	Aggregate living area	Aggregate bedroom area of	Storage
Target	3 Bed 5P house	92	13	34	32	5
Proposed	3 Bed 5P house	110	16.9	36.4	34.3	5

PLEASE NOTE:  
Minimum unobstructed living room width 3.8m.  
Main bedroom area 13m<sup>2</sup>. Double room 11.4m<sup>2</sup> (2.8m minimum width), Single 7.1m<sup>2</sup> (2.1m minimum width)



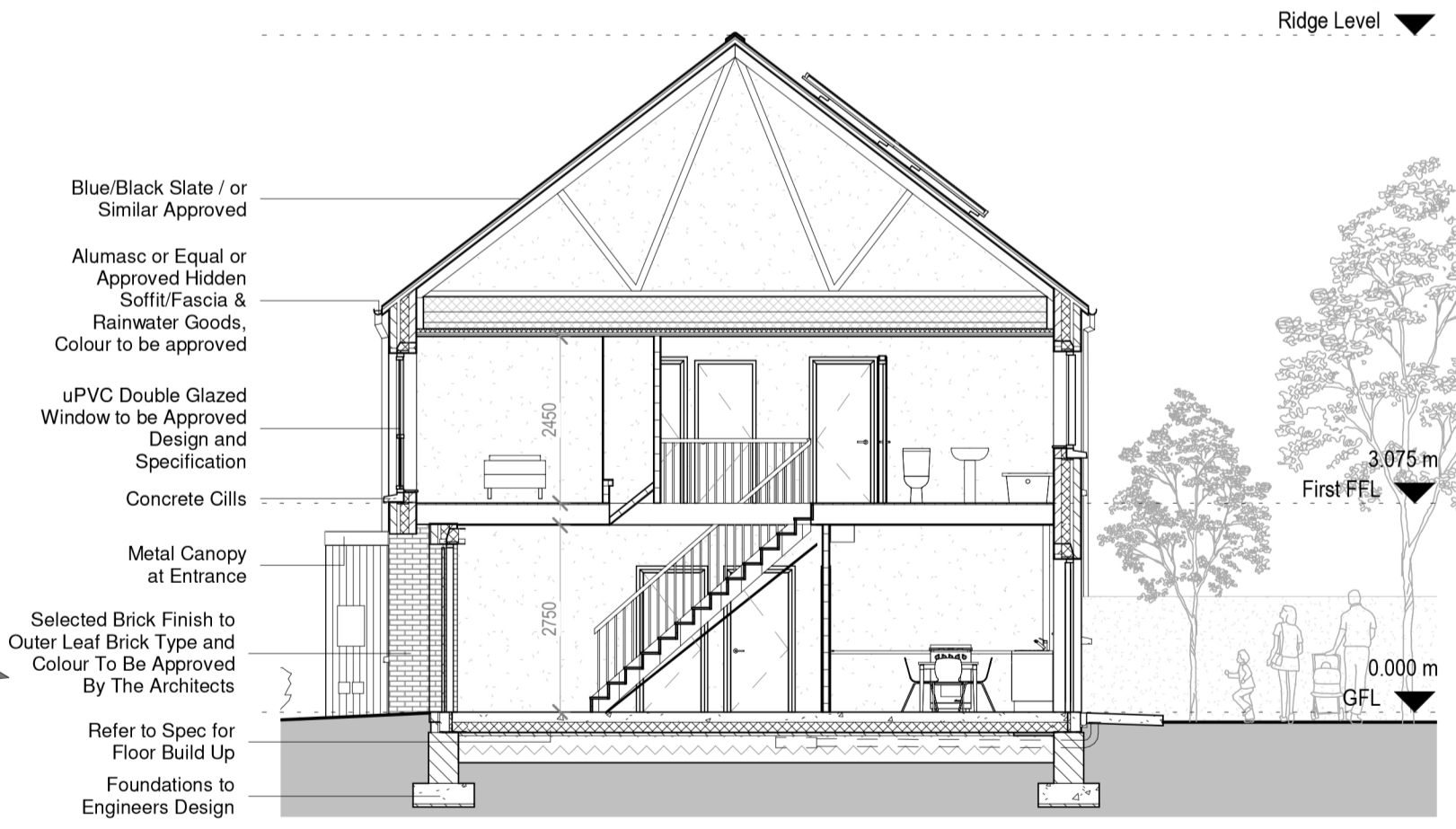
3 Block 4.2 - Front Elevation  
1:100

- Blue/Black Slate / or Similar Approved
- Alumasc or Equal or Approved Hidden Soffit/Fascia & Rainwater Goods, Colour to be approved
- Metal Window Box to Match Window RAL Colour
- uPVC Double Glazed Window to be Approved Design. Refer to Spec for U-Value etc.
- Straight Edged Coated Aluminium Cill to Match Window RAL Colour
- Entrance Aluminium Coated Canopy to Match Window RAL Colour
- Selected Brick Finish to Outer Leaf Brick Type and Colour To Be Approved By The Architects



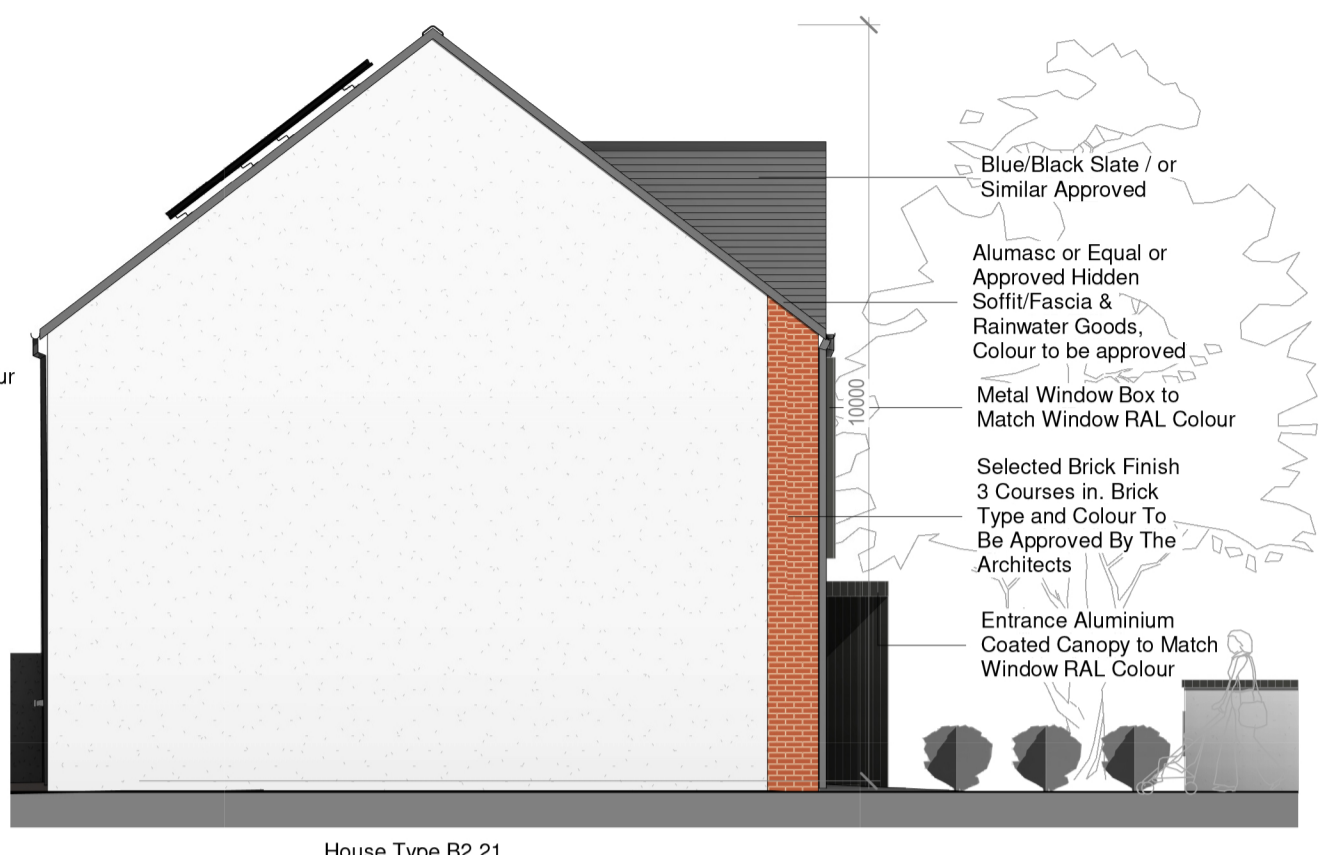
4 Block 4.2 - Rear Elevation  
1:100

- Size and Position of PV Panels May Vary with Orientation of Dwelling
- Blue/Black Slate / or Similar Approved
- Alumasc or Equal or Approved Hidden Soffit/Fascia & Rainwater Goods, Colour to be approved
- uPVC Double Glazed Window to be Approved Design. Refer to Spec for U-Value etc.
- Straight Edged Coated Aluminium Cill to Match Window RAL Colour
- Soltherm or Equivalent Pre-Finished External Render To Be Approved By The Architects



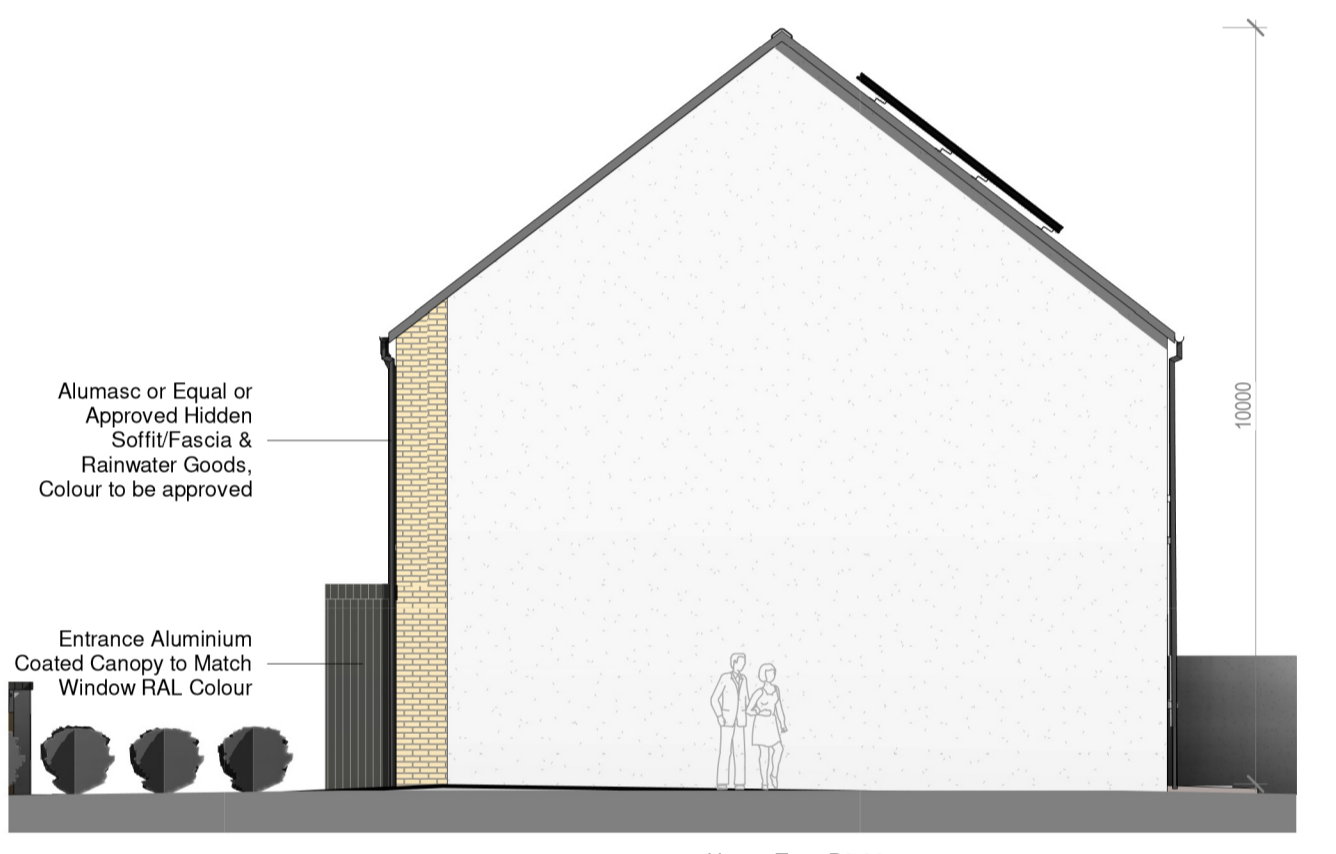
7 Block 4.2 - Section A-A  
1:100

- Blue/Black Slate / or Similar Approved
- Alumasc or Equal or Approved Hidden Soffit/Fascia & Rainwater Goods, Colour to be approved
- uPVC Double Glazed Window to be Approved Design and Specification
- Concrete Cills
- Metal Canopy at Entrance
- Selected Brick Finish to Outer Leaf Brick Type and Colour To Be Approved By The Architects
- Refer to Spec for Floor Build Up
- Foundations to Engineers Design



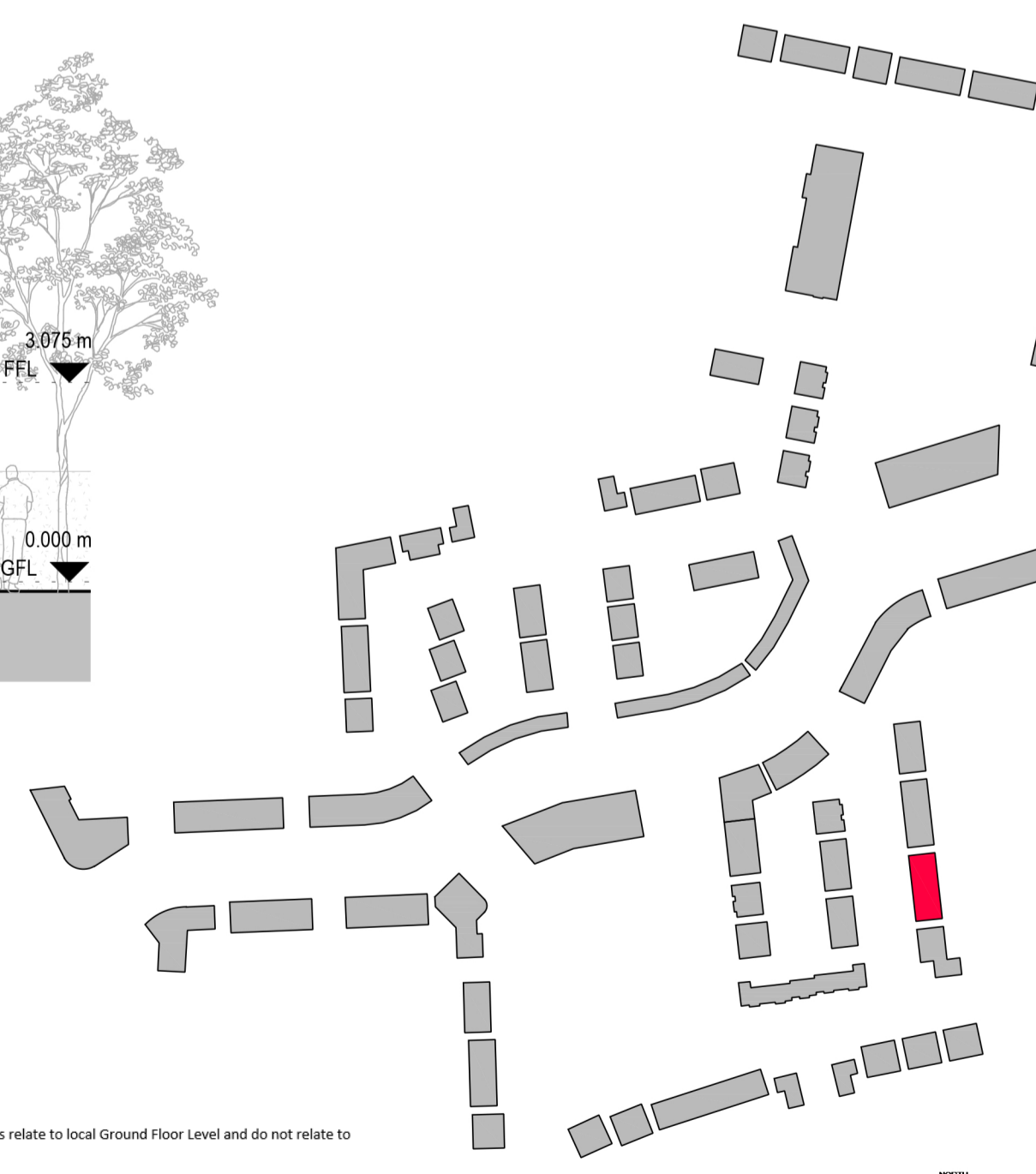
5 Block 4.2 - Side Elevation 1  
1:100

- Blue/Black Slate / or Similar Approved
- Alumasc or Equal or Approved Hidden Soffit/Fascia & Rainwater Goods, Colour to be approved
- Metal Window Box to Match Window RAL Colour
- Selected Brick Finish 3 Courses in Brick Type and Colour To Be Approved By The Architects
- Entrance Aluminium Coated Canopy to Match Window RAL Colour



6 Block 4.2 - Side Elevation 2  
1:100

- Alumasc or Equal or Approved Hidden Soffit/Fascia & Rainwater Goods, Colour to be approved
- Entrance Aluminium Coated Canopy to Match Window RAL Colour



**CPR Note:**  
All works to be carried out using proper materials which are fit for the use they are intended and for the condition in which they are to be used.

All materials used in connection with the works to comply with the Construction Products Regulation (EU) No. 305/2011 and the harmonised technical specification/standards that fall within the remit of the CPR No. 305/2011

**van Dijk Architects**  
MILL HOUSE, MILL STREET, DUNDALK, CO. LOUTH  
TEL: 042-9354466 FAX: 042-9354460  
INFO@VANDIJKARCHITECTS.COM

DRAWING TITLE  
BLOCK 4.2-UNITS-B2.21 / B2.5 / B2.18 / B2.20 PLANS, ELEVATIONS & SECTION

SCALE	DATE	DESIGNER	CHECKED
AS INDICATED	1757-PA-BL42-100	DW	CLONMENCHILLAMORE
REVISION	A1	1757-VIA-M3-BL42	STEINFORT INVESTMENT
REVISED BY	DW	DATE	OCTOBER 2021

FILED DRAWINGS MUST BE USED IN PREFERENCE TO QUOTE DRAWINGS. ANY DIMENSIONAL DISCREPANCIES MUST BE REPORTED TO THE ARCHITECT IMMEDIATELY. THIS DRAWING REMAINS THE COPYRIGHT OF VAN DIJK ARCHITECTS. IT MUST NOT BE USED FOR ANY PURPOSES BEYOND OR OTHERWISE WITHOUT THE EXPRESS PERMISSION OF THE ARCHITECT. DO NOT COPY OR REPRODUCE THESE DRAWINGS OR ANY ADDITIONAL INFORMATION WITHOUT THE EXPRESS APPROVAL OF VAN DIJK ARCHITECTS

NOTE:  
Levels shown on architectural block plans relate to local Ground Floor Level and do not relate to Ordnance Datum.  
For Finished Ground Floor Levels related to Ordnance Datum see DBFL Engineers drawings numbered: 180002-2000 Roads Layout / 180002-2001 Roads Layout Sheet 1 / 180002-2002 Roads Layout Sheet 2